

Includes our  
Finishing  
Touches  
promotion

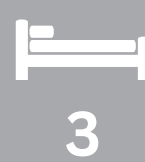


Lot 559 316-330 Twelfth Ave. Austral

Blaxland 18 Design

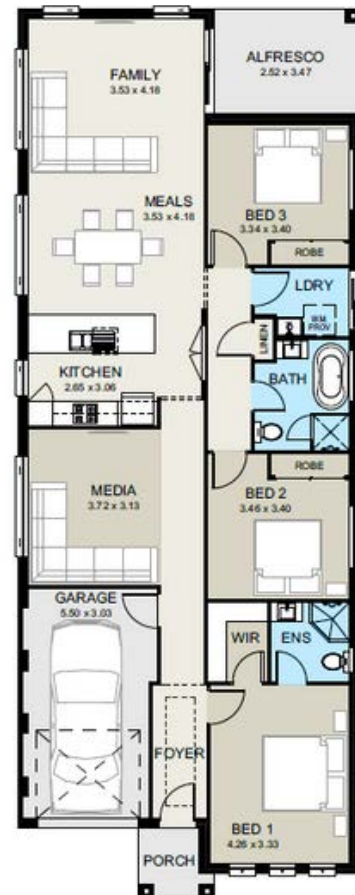
Land Size: 330m<sup>2</sup>

Home Size: 166m<sup>2</sup>



### Inclusions

- Stradbroke Façade
- Standard Site Costs & 7\* Basix allowance
- Actron Ducted Air-Conditioning
- Floor Coverings (Tiles & Carpet) as per Brochure
- Tiled Porch & Patio
- Colour Concrete Driveway & Plain Crossover
- Stainless Steel Oven & Rangehood
- Stainless Steel Dishwasher
- Stone Benchtops to Kitchen
- Polytec Kitchen Cabinetry
- Bulkheads to Overhead Cabinetry
- Soft-Close Drawers & Cabinets
- Wall-Hung Vanities
- Freestanding Bath
- 3-Coat Paint System
- T2 Termite-Treated Frame
- Concrete Roof Tiles with Sarking



### Sales Contact

Chris 0414 386 848

sales@bluetonguehomes.com.au