



HOME+LAND

BRIDGEDALE (CUSTOM) 13 - FREEDOM FACADE

LOT 565 PROPOSED ROAD, AUSTRAL

CUSTOMISE THIS PACKAGE WITH A DIFFERENT DESIGN OR FACADE

PACKAGE PRICE
\$1,055,000

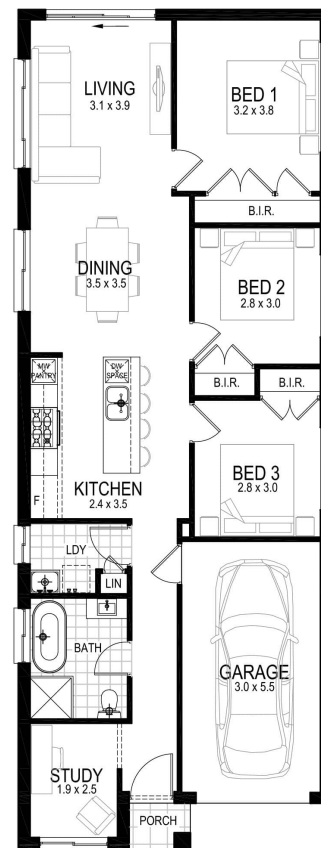
 3
  1
  1
  122.50m
  300m²

HOME+LAND

FIXED PRICE PACKAGE INCLUSIONS*

- ✓ For just a \$1,000 holding fee, you can secure a beautiful, spacious home and a prime piece of land in a sought-after location.
- ✓ Whether you're looking to invest or create the perfect family haven, this package promises a hassle-free path to homeownership.
- ✓ SOLAR PACKAGE NOW INCLUDED!
- ✓ Fixed price site costs
- ✓ Fixed base price until anticipated registration date of June 2026
- ✓ Choose your design and facade (subject to lot design)
- ✓ BASIX Package
- ✓ Concrete Driveway
- ✓ Fujitsu ducted airconditioning
- ✓ 2.6m ceiling height to ground floor

PLUS much more from our Evolve Luxury Upgrade Package!



CONTACT **HOME AND LAND TEAM** ON **1800 446 637**

homeandland@masterton.com.au