



HOME+LAND

PASADENA (CUSTOM) 22/1A OPTION 1 - NEW HAVEN FACADE

LOT 621 PROPOSED STREET, AUSTRAL

PACKAGE PRICE

\$1,204,000

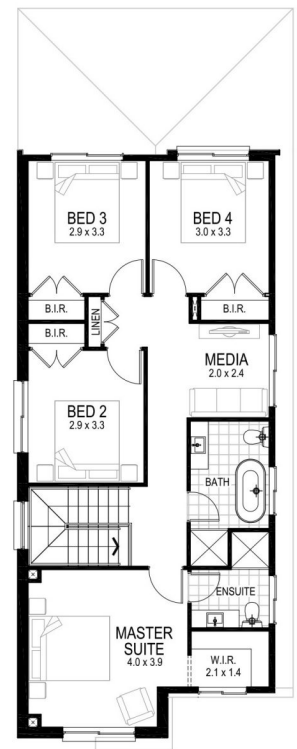
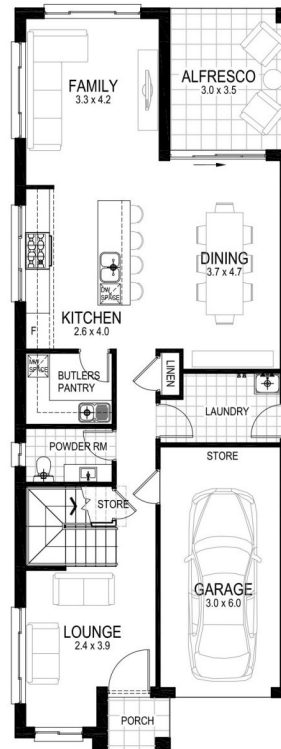
 4
  2.5
  1
  210.60m
  301.5m²

HOME+LAND

FIXED PRICE PACKAGE INCLUSIONS*

- ✓ For just a \$1,000 holding fee, you can secure a beautiful, spacious home and a prime piece of land in a sought-after location.
- ✓ Whether you're looking to invest or create the perfect family haven, this package promises a hassle-free path to homeownership.
- ✓ SOLAR PACKAGE NOW INCLUDED!
- ✓ Fixed price site costs
- ✓ Fixed base price until anticipated registration date of June 2026
- ✓ Choose your design and facade (subject to lot design)
- ✓ BASIX Package
- ✓ Concrete Driveway
- ✓ Fujitsu ducted airconditioning
- ✓ 2.6m ceiling height to ground floor

**PLUS much more from our
Evolve Luxury Upgrade Package!**



CONTACT **HOME AND LAND TEAM** ON **1800 446 637**

homeandland@masterton.com.au