

# House & Land Package

Domaine homes



Lot 3005

[ Kelly St, Austral ]

Package Price  
\$1,166,980

## Inclusions

- Lifetime Structural Guarantee
- Hybrid steel frame
- Induction cooktop
- 20mm stone kitchen benchtop
- Laminated overhead cupboards with bulkheads.
- Soft close drawers and doors to kitchen and bathrooms
- Stainless steel dishwasher
- Flyscreens to opening windows
- Floor coverings
- Downlights throughout home
- Fully ducted Air Conditioning
- Double glazed windows
- 6.6kW Solar

And much, much more...



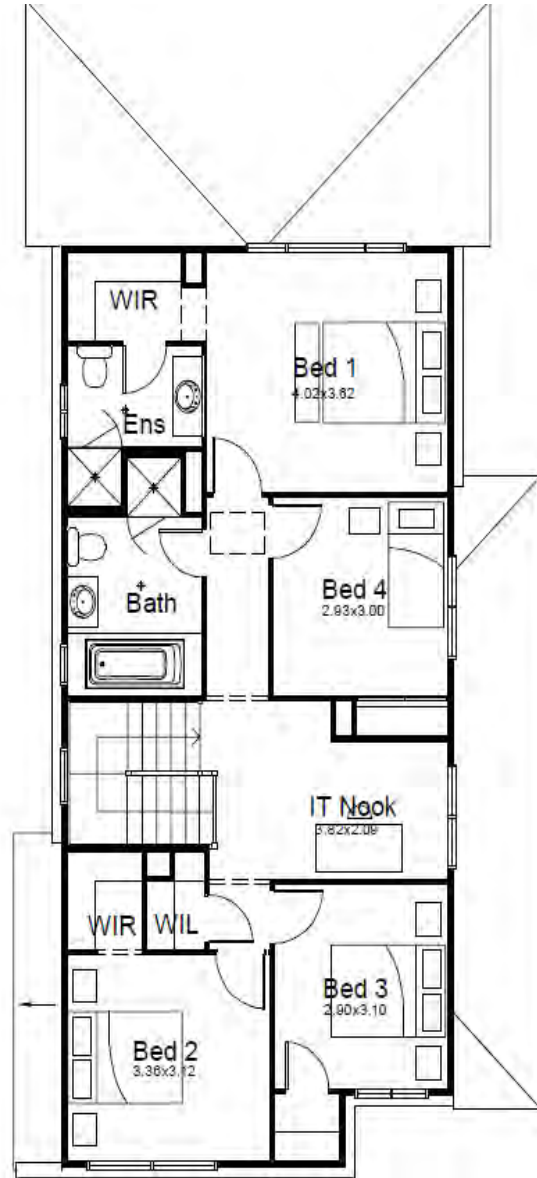
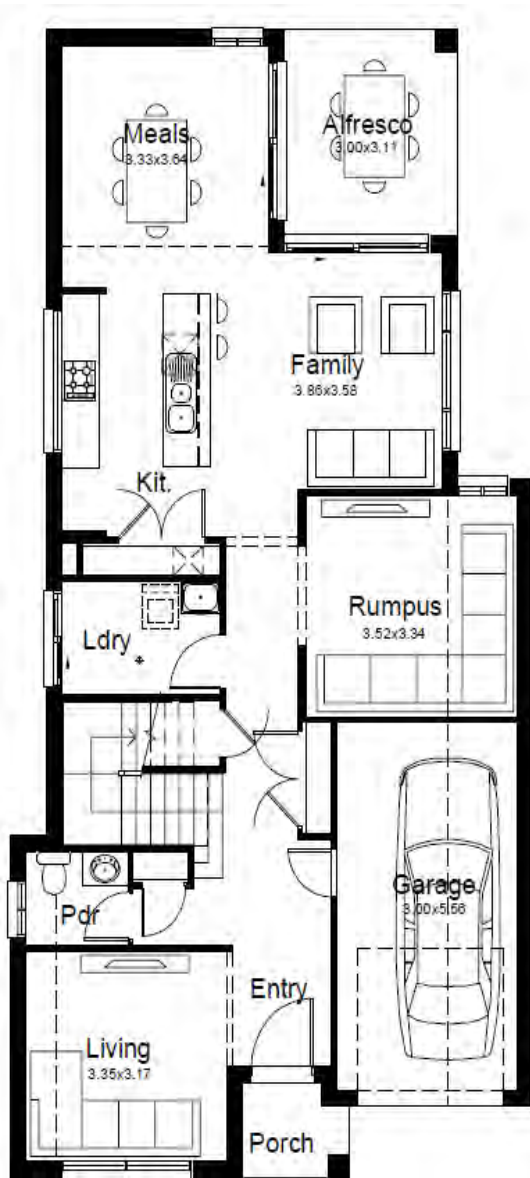
10 m

# Lot 3005

4  2.5  1 

<b>Land Size</b>	<b>322.4 sqm</b>
Ground Floor	101.9sqm
First Floor	91.78 sqm
Total	223.14 sqm

Garage	18.91 sqm
Alfresco	8.96sqm
Porch	2.40sqm



0438 016 360 - Mark

**Domaine homes**

DISCLAIMER: \*Facade image may depict features not included in the package prices shown such as render, tiling, lighting, roof covering, timber decking and landscaping. Plans are subject to approval by the Principal Developer and Local Authorities. Domaine Homes NSW reserves the right to withdraw or alter this package at any time without notice. Allowance for site costs included, pricing is subject to change without notice. Domaine Homes NSW is not the owner of the land and is not responsible for final site dimensions or registration times. All information given at this time is believed to be correct.