

# House & Land Package

Domaine homes



Lot 120

[Hydrus Steet, Austral ]

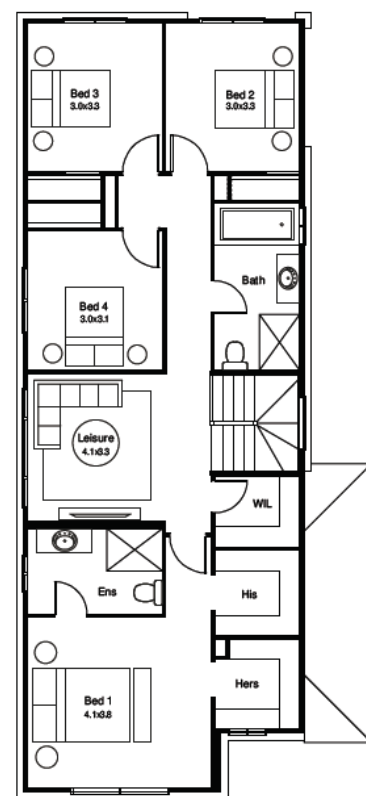
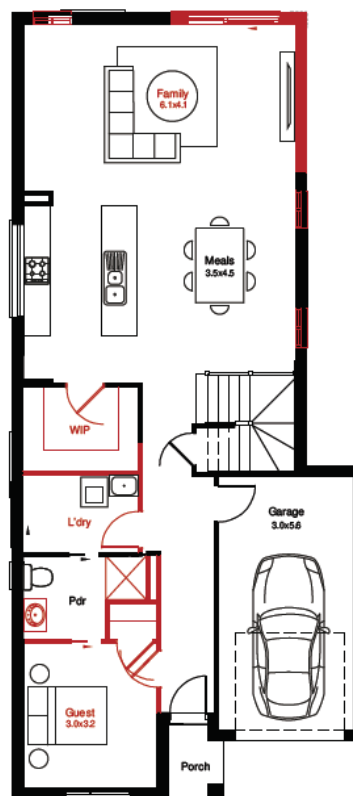
Package  
Price Trevi 24  
\$\*1,064,150

## Inclusions

### HOUSE AND LAND PACKAGE INCLUSIONS

- Lifetime Structural Guarantee
- Hybrid steel frame
- Induction cooktop
- 20mm stone kitchen benchtop
- Laminated overhead cupboards with bulkheads.
- Soft close drawers and doors to kitchen and bathrooms
- Stainless steel dishwasher
- Flyscreens to opening windows
- Floor coverings
- Downlights throughout home
- Fully Ducted Air Conditioning
- Driveway included
- 6.6kW Solar Package

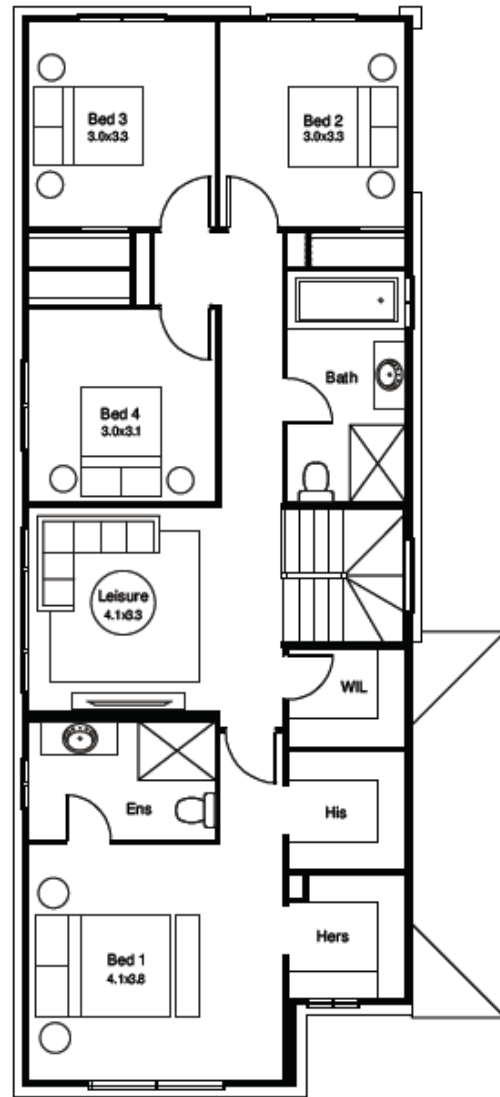
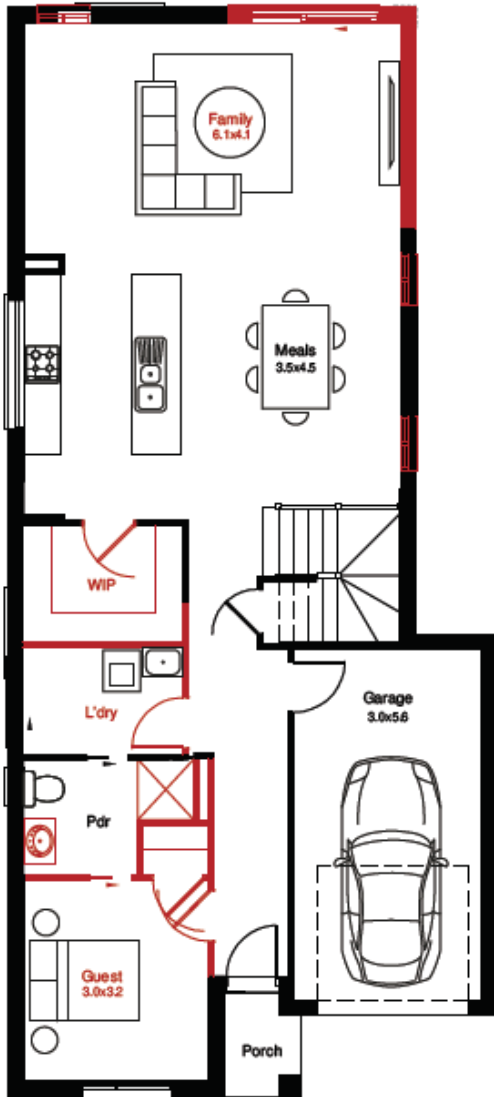
And much, much more...



# Lot 120

5  3  1 

<b>Land Size</b>	<b>254.8sqm</b>	Garage	19.43sqm
Ground Floor	89.58sqm	Alfresco	0sqm
First Floor	104.80sqm	Porch	1.94sqm
<b>Total</b>	<b>224.91 sqm</b>		



0438 016 360 - Mark

**Domaine homes**

DISCLAIMER: \*Facade image may depict features not included in the package prices shown such as render, tiling, lighting, roof covering, timber decking and landscaping. Plans are subject to approval by the Principal Developer and Local Authorities. Domaine Homes NSW reserves the right to withdraw or alter this package at any time without notice. Allowance for site costs included, pricing is subject to change without notice. Domaine Homes NSW is not the owner of the land and is not responsible for final site dimensions or registration times. All information given at this time is believed to be correct.